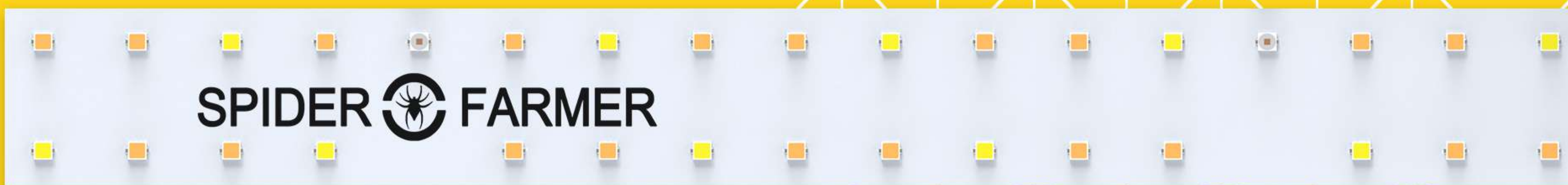


SPIDER  FARMER

LED GROW LIGHT & GROW TENT

PRODUCT CATALOG

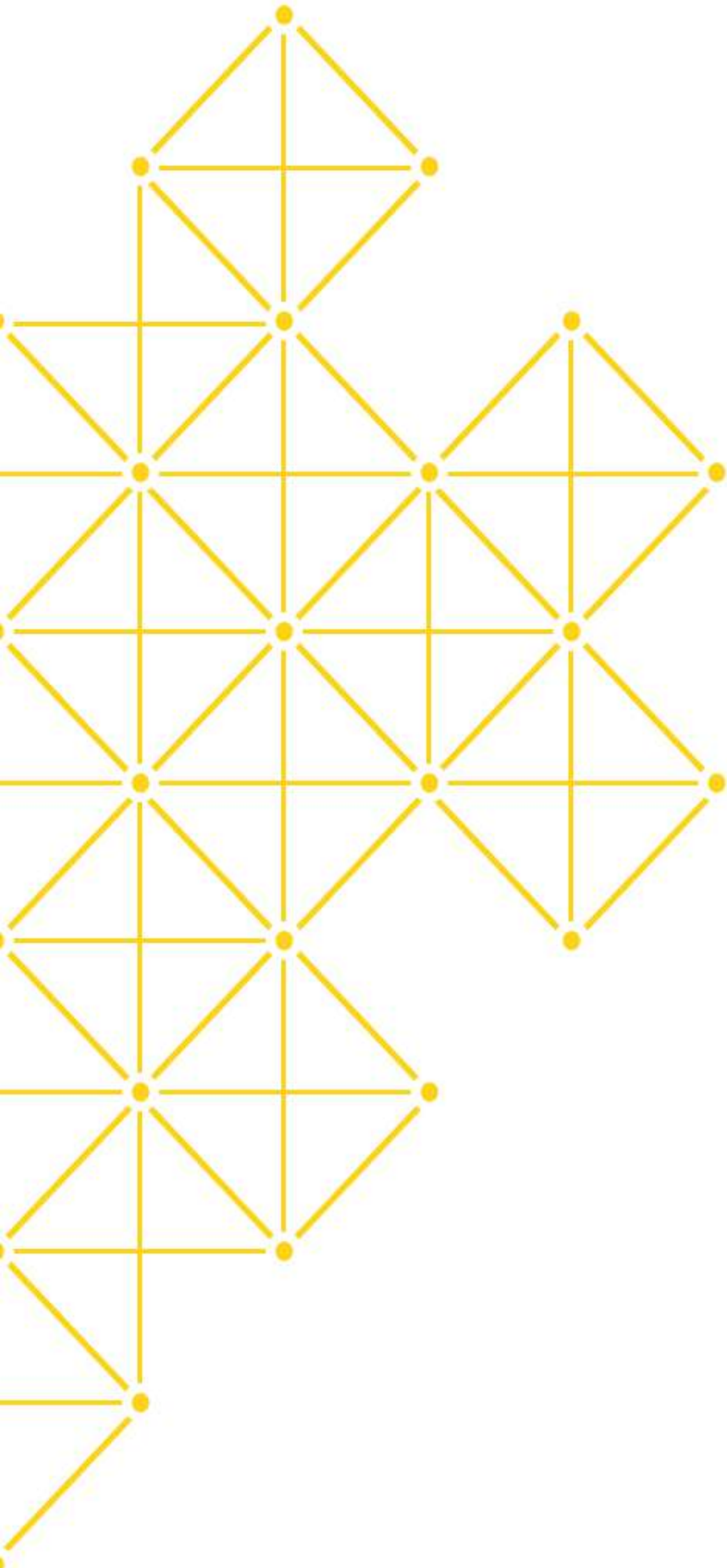
SF LED GROW LIGHT



GROW TENT

www.spider-farmer.com

SPIDER FARMER CATALOG



Company introduction.....02

Led Grow lights.....03

- SE1000W/G1000W
- SE7000/5000/3000
- SF7000/4000/2000/1000
- SF600/SF300

Grow Tent.....10

- 150 X 150 X200 CM (5'X 5'X 6.6')
- 140 X 70 X200 CM (4.5'X 2'X 6.6')
- 120 X 120 X200 CM (4'X 4'X 6.6')
- 90 X 90 X180 CM (3'X 3'X 6')
- 70X70X160 CM(2.3'X2.3'X5')

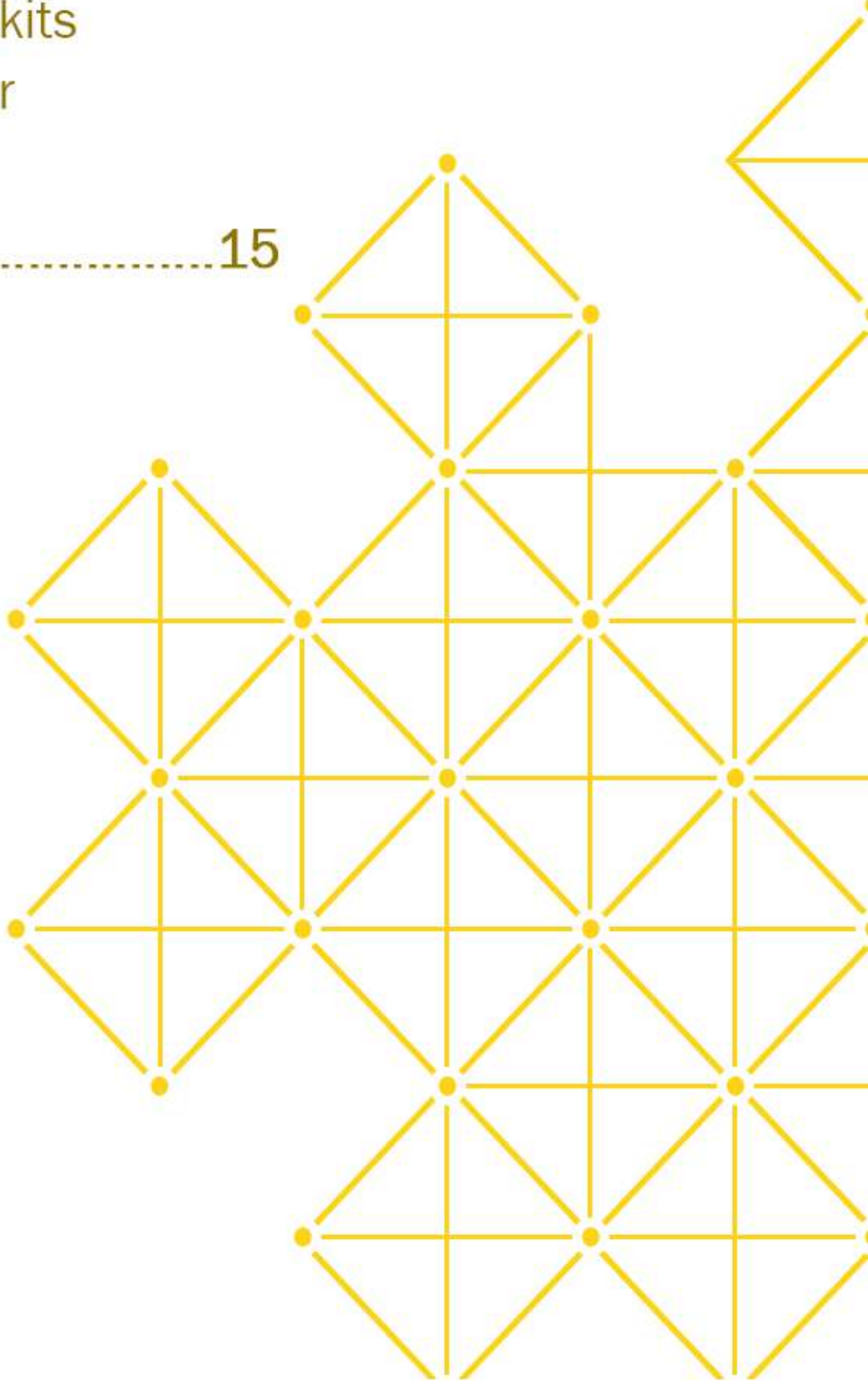
Grow Kits.....11

- SF1000 full grow kits
- SF2000 full grow kits
- SF Grow Kits-4
- SF Grow Kits-6

Accessories.....12

- Spider Farmer Seedling Heat
- Grow bags
- 4/6 inch knob fan kits
- 4/6 inch intelligent fan kits
- Spider Farmer controller

Warranty.....15



COMPANY INTRODUCTION

Created in 2015, Spider Farmer will always be fresh in providing the most suitable LED grow lights with the high quality as well as the affordable prices. There exists inexhaustible innovation ability in the Spider Farmer Team, the true action to manufacture the latest LED grow lights is a strong proof for this point. Most importantly, customer orientation is the highest objective of Spider Farmer, we are keeping chasing this goal since our establishment. A complete and considerable sales and after sales service system is formed, and still on its way to perfect. Therefore, oversea warehouses are the other bright point for improving the purchasing experience of our customers. We will always keep the customer opinions in mind, and make the grow become simple.

Happy grow
Spider Farmer Team



RoHS

**Samsung LED In-branding
Official Partner**

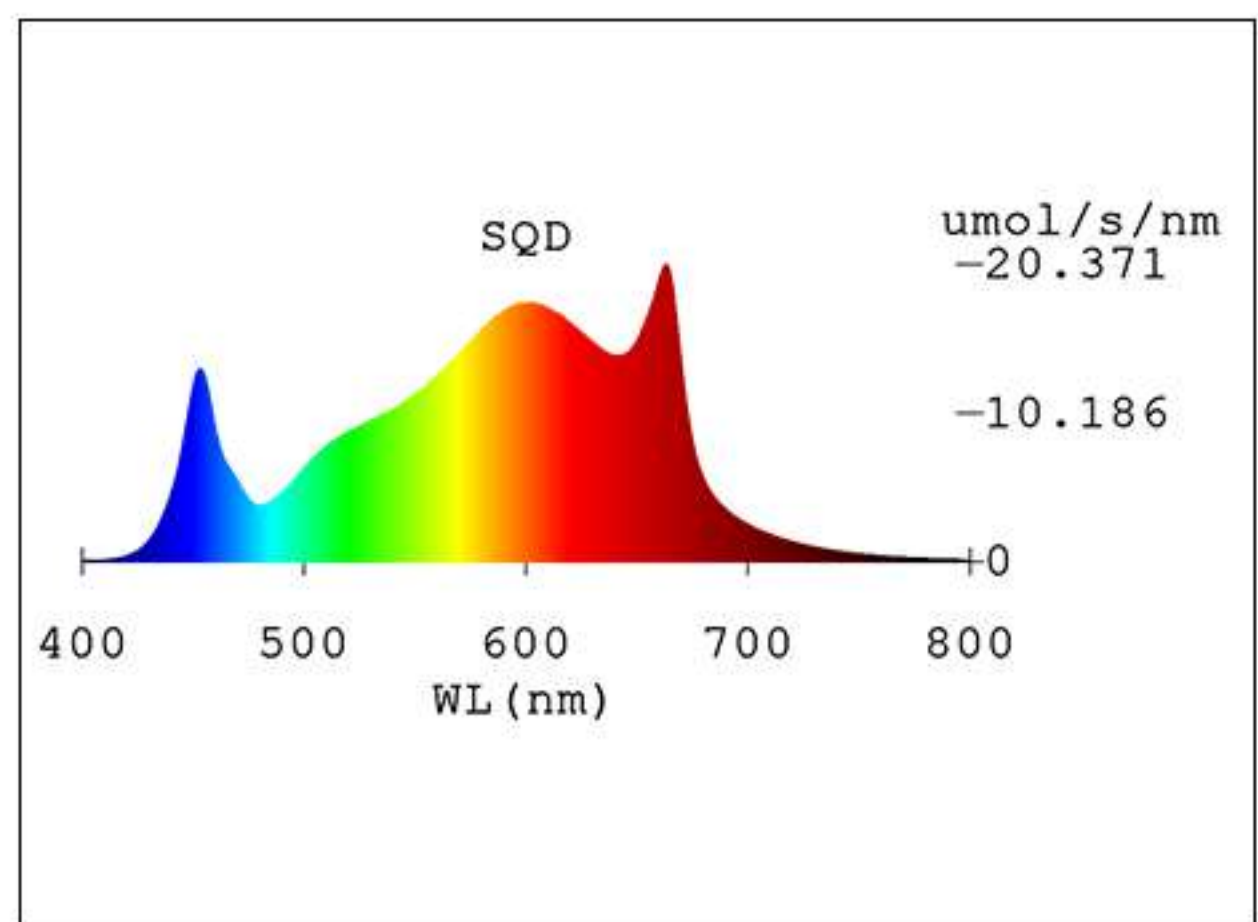


SE 1000W/G1000W

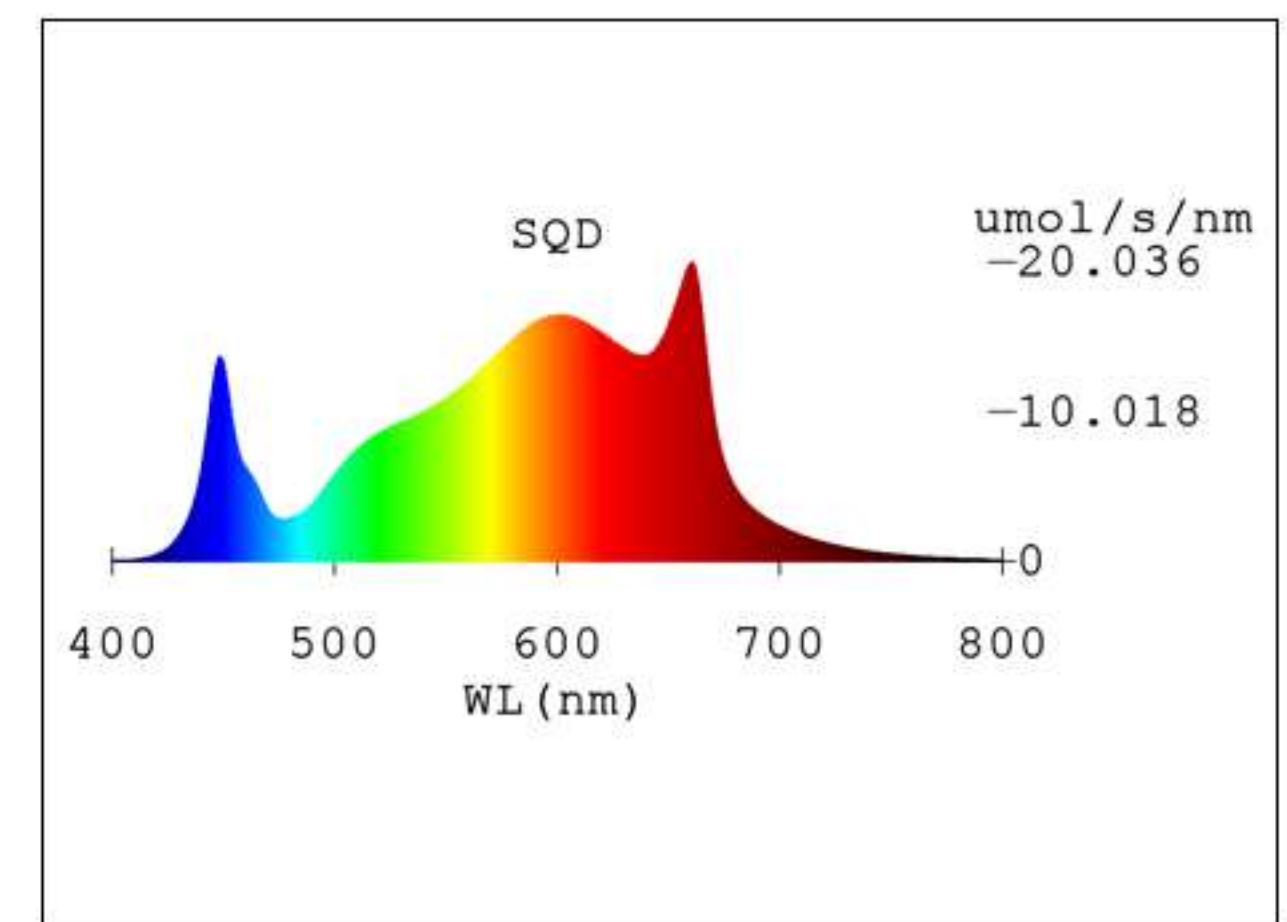


● FULL SPECTRUM

SE 1000W



G1000W

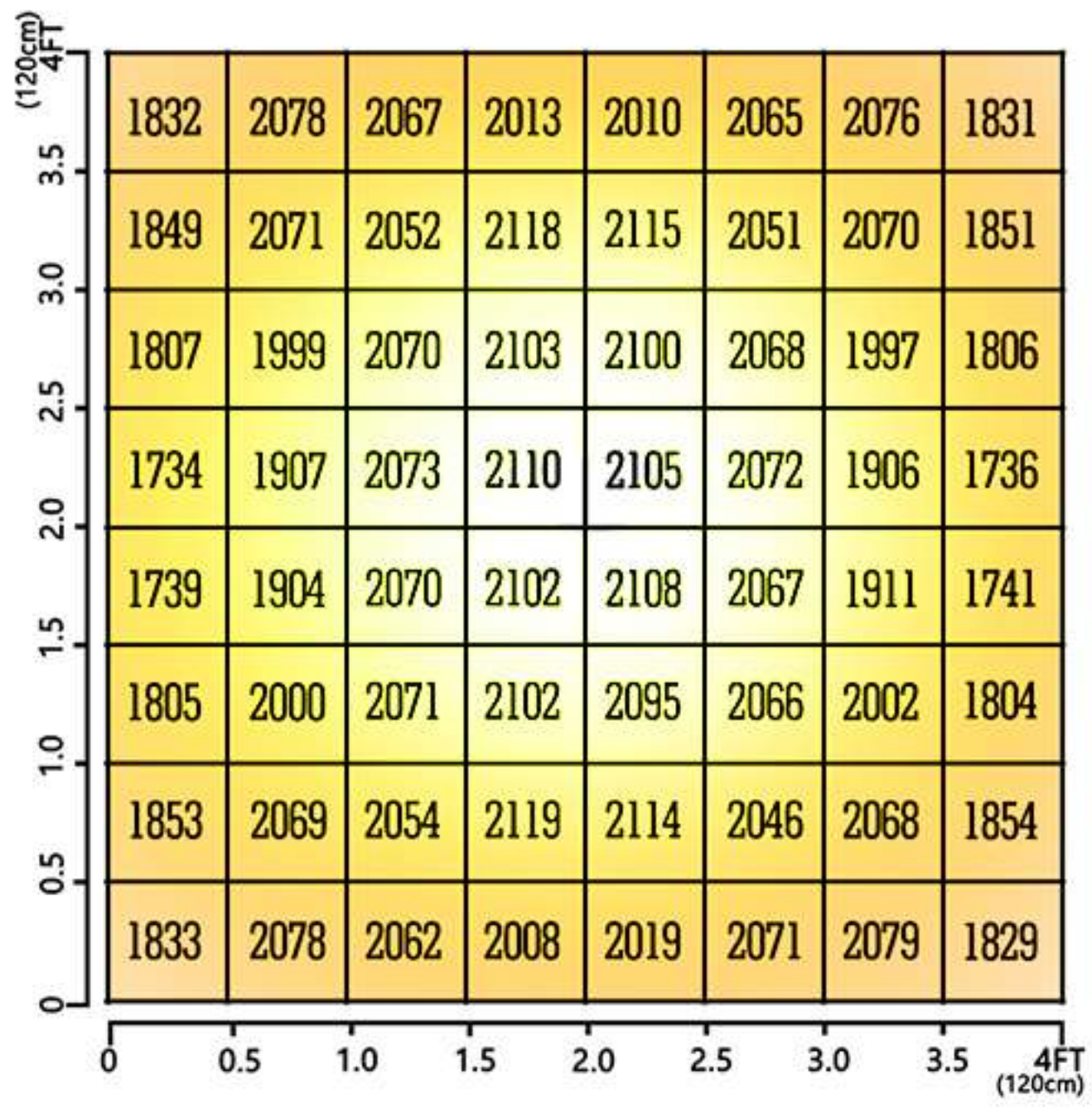


● SPECIFICATIONS

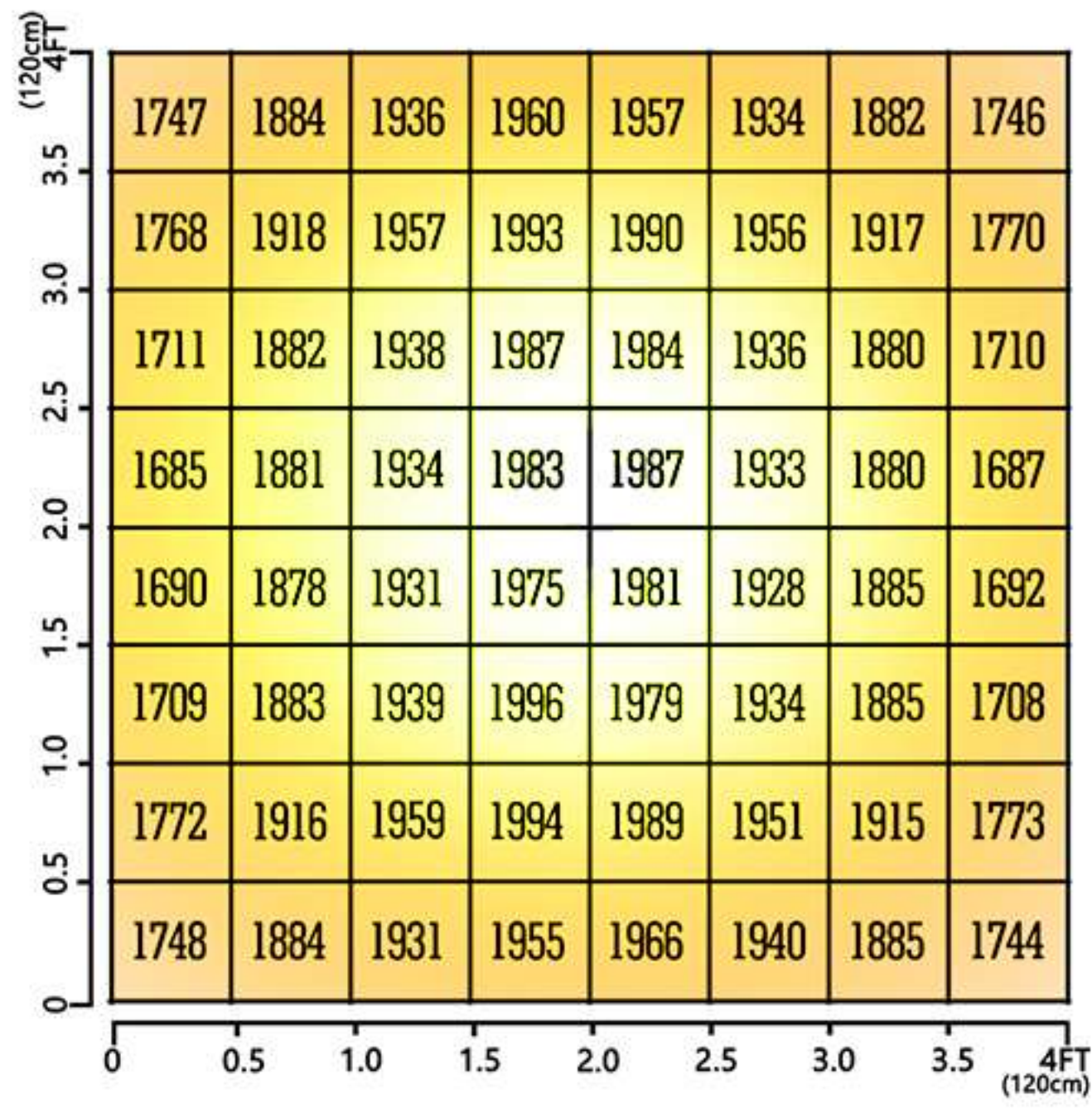
| Model | Power Draw | Par Value | Amps | LED | Footprint | Energy Efficacy |
|---------|----------------------|---------------------|-------------------|------------------------------|---|-----------------|
| SE1000W | 1000W @AC200-277V | 2955umol/S @220V | 4.678A @AC220V | Samsung LM301B 3710pcs | Commercial: 4x4 FT Personal Coverage: 5x5 FT | 2.9umol/J |
| G1000W | 1000W @AC200-277V | 2772umol/S @220V | 4.558A @AC220V | Bridgelux 4910pcs | Commercial: 4x4 FT Personal Coverage: 5x5 FT | 2.9umol/J |

● PPF(12')

SE 1000W



G1000W



● Certification



RoHS

Features:

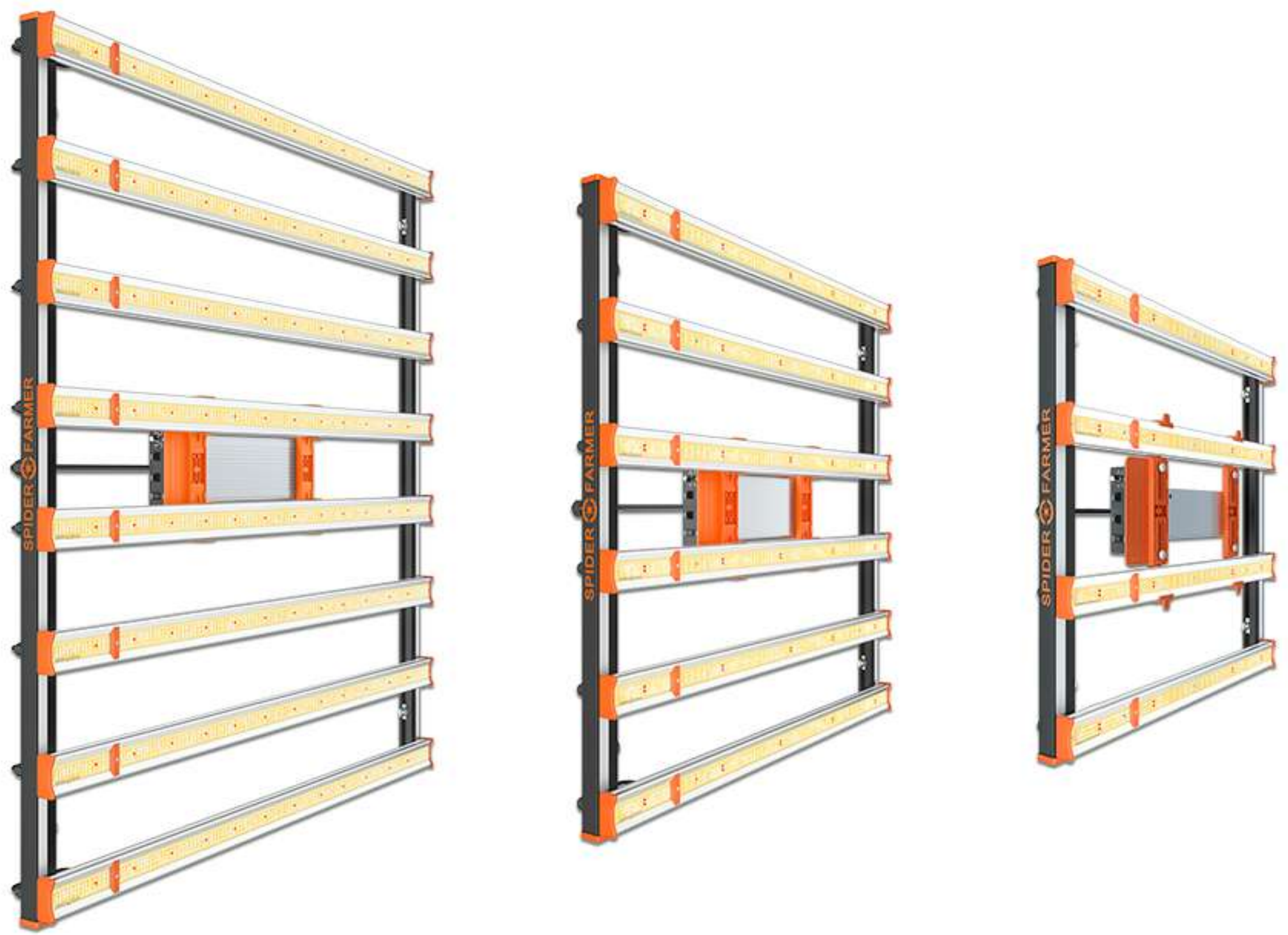
- 1) 2.9 umol/J High Efficiency.
- 2) Uniform PPFd: Average par value up to 1800. Uniform photon distribution makes high yields on edge area.
- 3) Optimized Full Spectrum: Fits for all stages. More red light for flower stage, increasing the cannabis yields by 20%-50%.
- 4) Using under CO2 system.
- 5) Daisy Chain: Support up to 50 lights.

● FUNCTION

- ▶ Perfect for commercial growing
- ▶ Main Light Dimming Control
- ▶ Support up to 30 lights

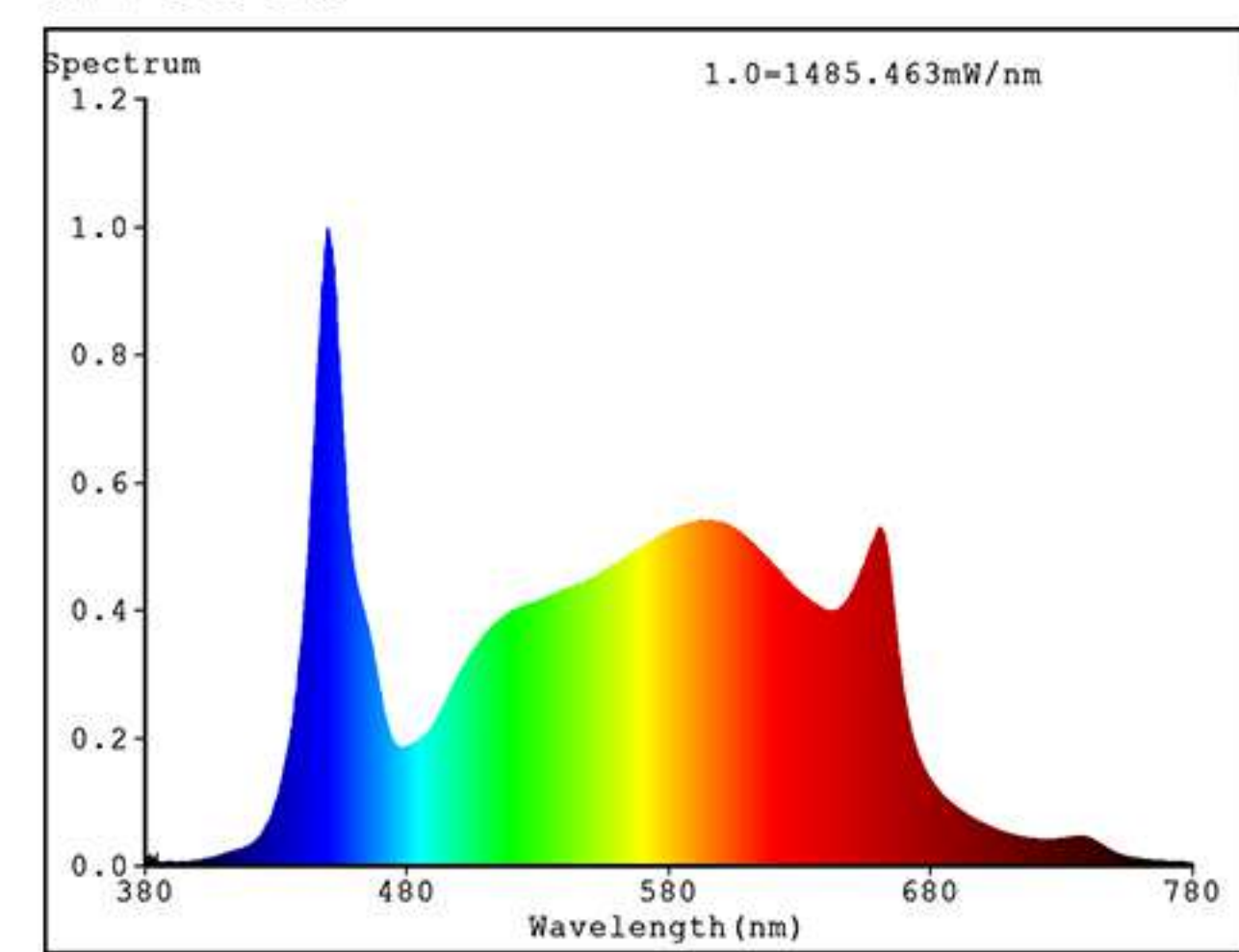


SE 7000/5000/3000

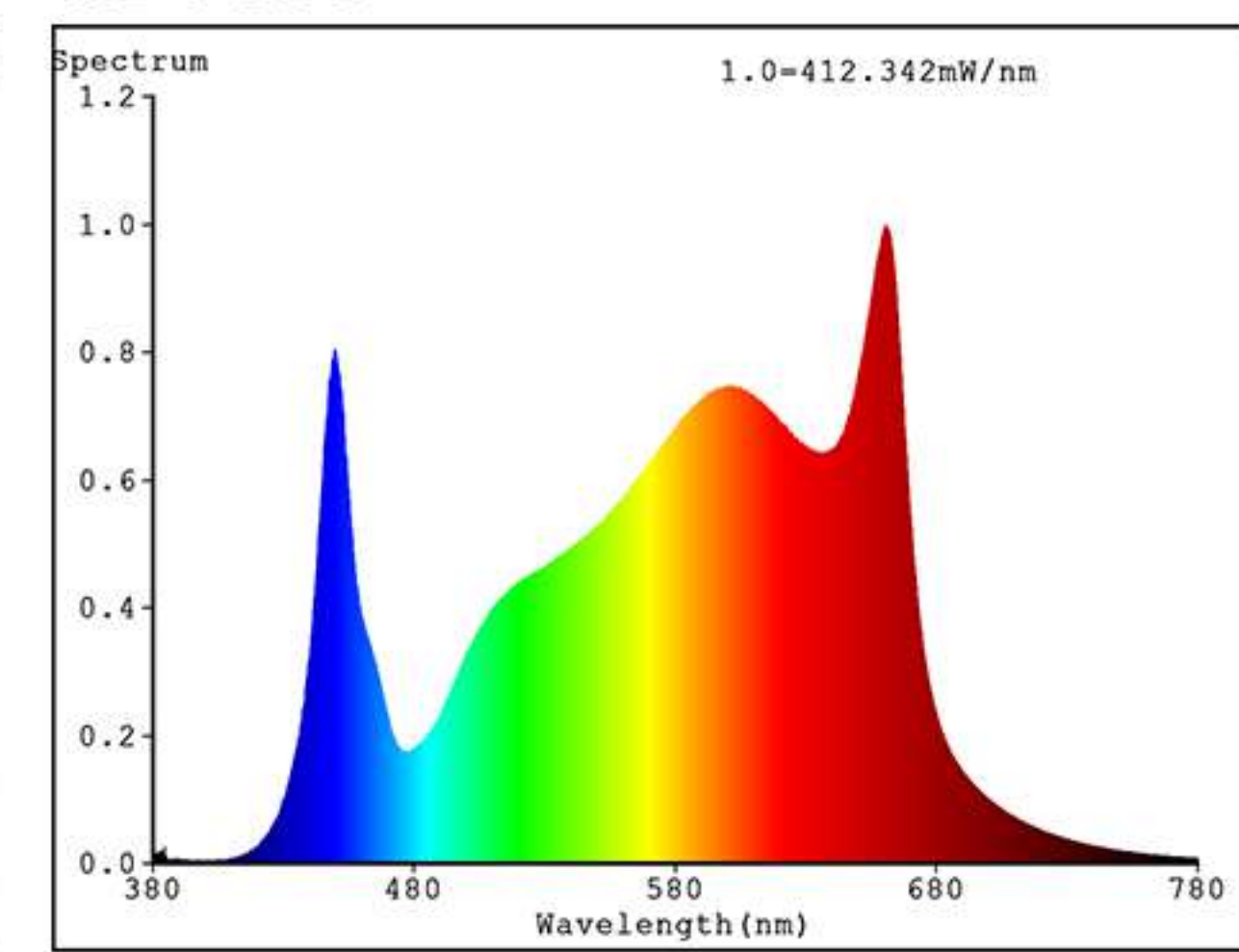


● FULL SPECTRUM

SE 5000



SE 7000



● SPECIFICATIONS

| Model | Power Draw | Par Value | Amps | LED | Footprint | Energy Efficacy |
|--------|------------------------|-------------------|--|-------------------|---|-----------------|
| SE7000 | 650W±5% @AC100-277V | 1780.45 umol/S | 5.382A@AC120V 2.661A@AC240V 2.312A@AC277V | LM301B 2688pcs | Commercial: 4x4 FT Personal Coverage: 5x5 FT | 2.8umol/J |
| SE5000 | 480W±5% @AC100-277V | 1317.4 umol/S | 3.987A@AC120V 2.0009A@AC240V 1.752A@AC277V | LM301B 1680pcs | Commercial: 3x3 FT Personal Coverage: 4x4 FT | 2.75umol/J |
| SE3000 | 300W±5% @AC100-277V | 822.82 umol/S | 2.471A@AC220V 1.230A@AC220V 1.077A@AC220V | LM301B 896pcs | Commercial: 2x2 FT Personal Coverage: 3x3 FT | 2.75umol/J |

● PPF(12')

SE 5000

| | | | | | | | |
|-----|-----|------|------|------|------|-----|-----|
| 320 | 546 | 676 | 730 | 722 | 681 | 556 | 330 |
| 425 | 813 | 1029 | 1188 | 1171 | 1025 | 813 | 420 |
| 516 | 905 | 1215 | 1335 | 1330 | 1211 | 902 | 516 |
| 488 | 827 | 1105 | 1199 | 1192 | 1100 | 837 | 478 |
| 468 | 825 | 1109 | 1195 | 1200 | 1106 | 830 | 466 |
| 512 | 902 | 1210 | 1325 | 1338 | 1216 | 905 | 515 |
| 435 | 810 | 1030 | 1180 | 1173 | 1029 | 808 | 430 |
| 330 | 565 | 680 | 735 | 722 | 685 | 560 | 326 |

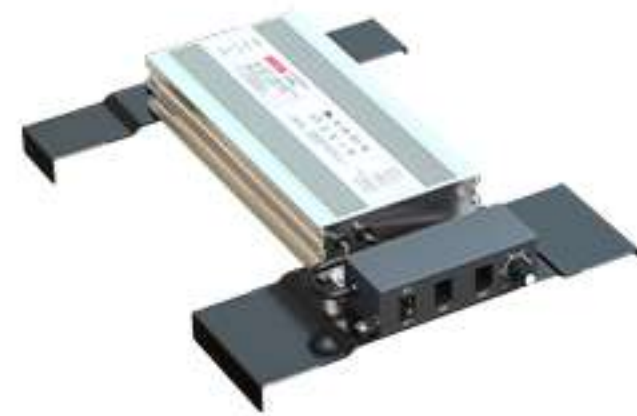
SE 7000

| | | | | | | | |
|-----|------|------|------|------|------|------|-----|
| 928 | 1190 | 1100 | 1130 | 1150 | 1179 | 1165 | 922 |
| 983 | 1170 | 1153 | 1186 | 1200 | 1160 | 1180 | 979 |
| 846 | 1047 | 1023 | 1073 | 1090 | 1077 | 1060 | 845 |
| 850 | 1006 | 1030 | 1040 | 1047 | 1020 | 1010 | 852 |
| 856 | 1002 | 1020 | 1039 | 1037 | 1030 | 1008 | 851 |
| 840 | 1048 | 1012 | 1089 | 1082 | 1018 | 1058 | 845 |
| 980 | 1178 | 1157 | 1190 | 1198 | 1150 | 1172 | 985 |
| 920 | 1170 | 1100 | 1130 | 1138 | 1120 | 1170 | 930 |

● TOP FEATURES



SAMSUNG
LM301



REMOVABLE
Driver



DIMMING
Daisy Chain

Features:

- 1) Lights distribution more uniform, par value on each point can up to 1000.
- 2) Can make lights closer to plants, flowering hang height can at 6"-8".
- 3) Higher efficacy and higher yielding up to 3.75-4.5 lb per light.
- 4) SE7000 up to 2688pcs Samsung chips to achieve outstanding efficiency, up to 2.8 $\mu\text{mol}/\text{j}$.
- 5) Lower consumption on each diodes, longer lifespan and save 50% money on electricity bill.
- 6) With dim knob and daisy chain, Plug-in light bar, easy to install.

● FUNCTION



Dimming Knob



Light Intensity



Multi-light connection
dimming operation

DIMMING DAISY CHAIN

- Up to 30 lights connected
- Multiple models daisy chain



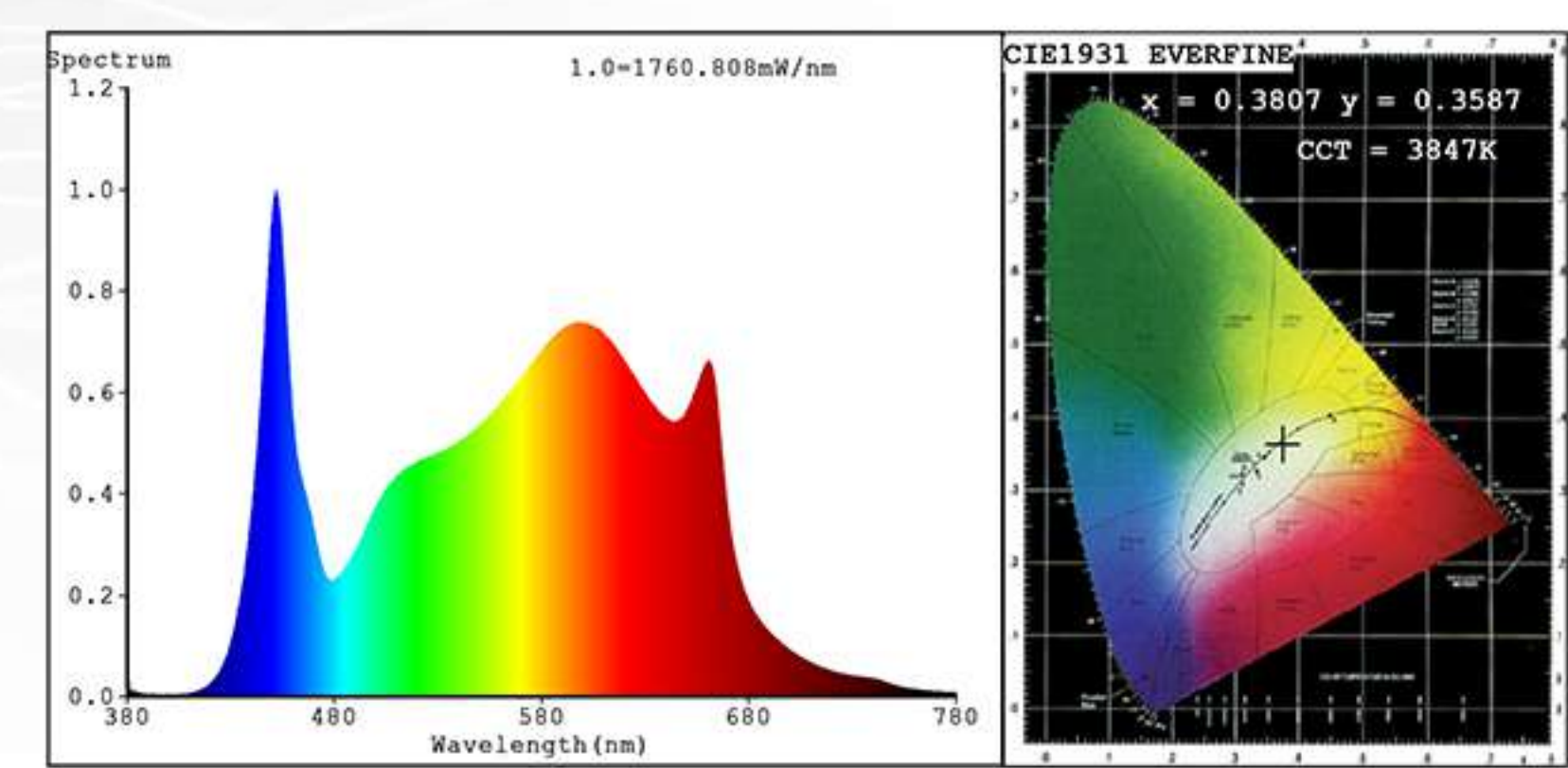
SF 7000/4000/2000/1000



● SPECIFICATIONS

| Model | Power Draw | Par Value | Amps | LED | Footprint | Energy Efficacy |
|--------|------------------------|-------------------|---|-------------------|--|-----------------|
| SF7000 | 650W±5% @AC100-277V | 1786 umol/S | 5.40A@AC120V 2.65A@AC240V 2.30A@AC277V | LM301 1716 pcs | Commercial: 5x5 FT Personal: 6x6 FT | 2.8umol/J |
| SF4000 | 450W±5% @AC100-277V | 1156.50 umol/S | 3.70A@AC120V 1.90A@AC240V 1.67A@AC277V | LM301 1212 pcs | Commercial: 4x4 FT Personal: 5x5 FT | 2.7umol/J |
| SF2000 | 200W±5% @AC100-277V | 514.2 umol/S | 1.64A@AC120V 0.82A@AC240V 0.75A@AC277V | LM301 506 pcs | Veg: 3x4 FT Flower: 2x4 FT | 2.7umol/J |
| SF1000 | 100W±5% @AC100-277V | 230 umol/S | 0.784A@AC120V 0.398A@AC240V 0.352A@AC277V | LM301 218 pcs | Veg: 3x3 FT Flower: 2x2 FT | 2.5umol/J |

● FULL SPECTRUM & PPFD(12")



SF 4000

| | | | | | | | | | |
|--|-------------|-----|------|------|------|------|------|-----|-----|
| | 224 | 281 | 336 | 402 | 417 | 399 | 334 | 279 | 223 |
| | 281 | 405 | 566 | 661 | 705 | 658 | 565 | 404 | 283 |
| | 358 | 637 | 1134 | 1424 | 1404 | 1421 | 1132 | 635 | 357 |
| | 424 | 815 | 1557 | 1902 | 1861 | 1899 | 1556 | 814 | 426 |
| | 433 | 805 | 1522 | 1904 | 1912 | 1906 | 1524 | 807 | 430 |
| | 425 | 817 | 1559 | 1901 | 1859 | 1897 | 1561 | 812 | 428 |
| | 359 | 634 | 1135 | 1425 | 1403 | 1416 | 1130 | 638 | 355 |
| | 285 | 406 | 562 | 656 | 714 | 664 | 568 | 402 | 287 |
| | 228 | 276 | 332 | 395 | 420 | 401 | 336 | 282 | 219 |
| | 4FT (120cm) | | | | | | | | |

● TOP FEATURES



SAMSUNG LM301



Meanwell Driver
SF1000, SF2000



SF2000, SF4000 ACQUIRED



SF1000, SF2000, SF4000 ACQUIRED

- 1) Lower Running Cost & Higher-Quality Yields
- 2) Customized Dimming Design
- 3) Ideal For All Growth Stages
- 4) Well Made & Solid Construction
- 5) Value For The Money

● FUNCTION



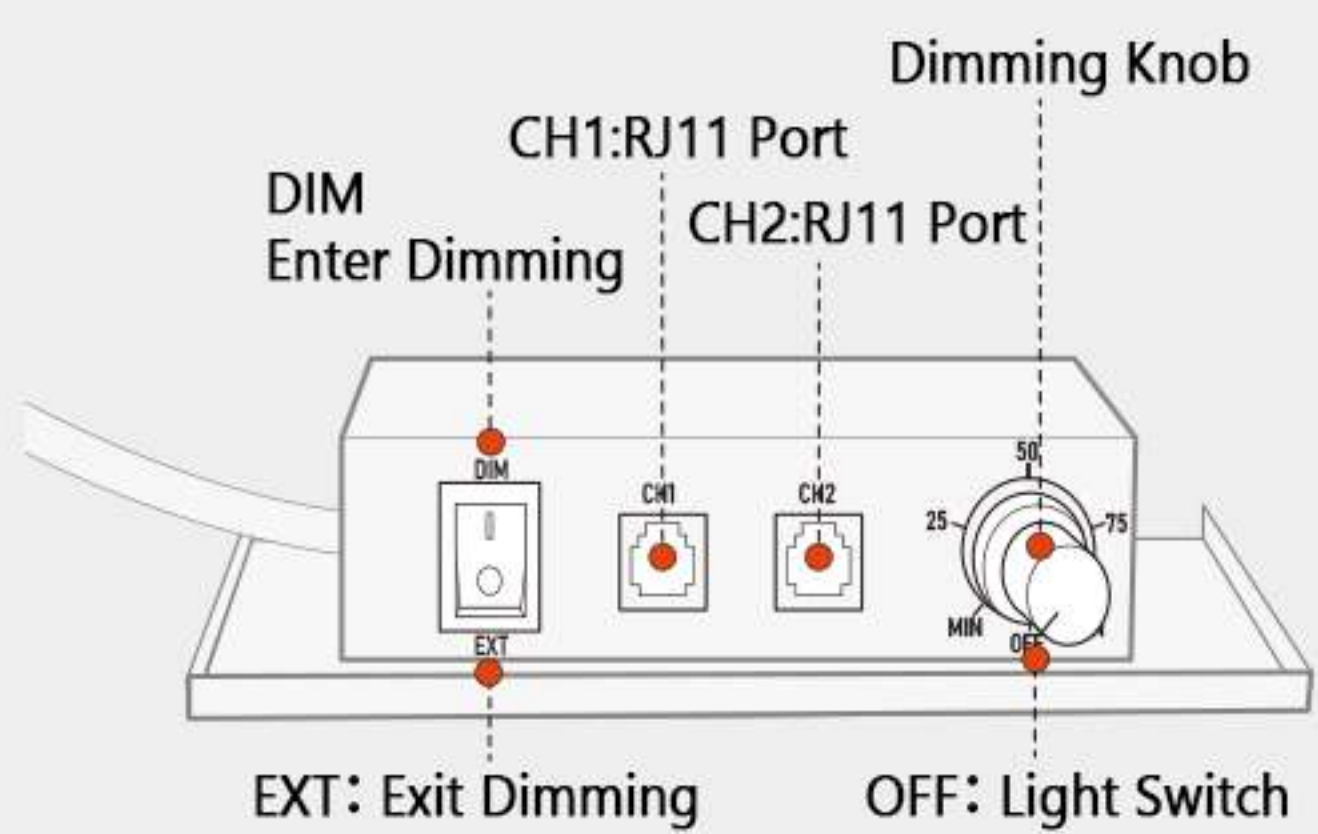
Light on-off switch



Easy control light dimming screw



Multi-light connection dimming operation



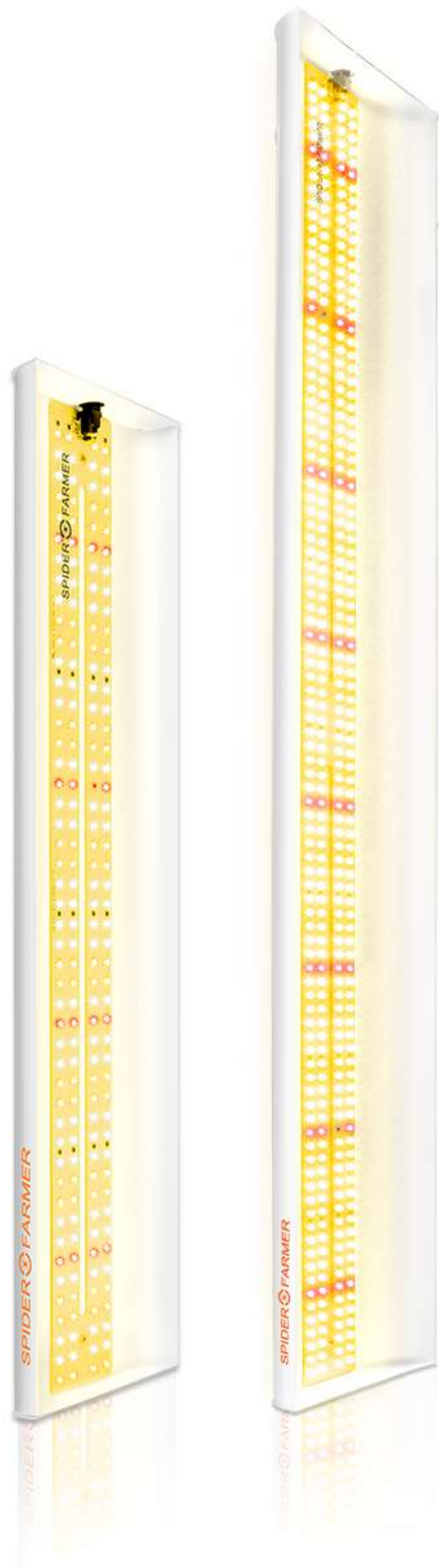
SF1000 & SF2000 & SF4000 can be connected to each other for dimming



SF 600/300

● SPECIFICATIONS

| Model | Power Draw | Amps | Frequency | Footprint | Par value | LED | Light Size |
|-------|--------------------------------------|----------------------------------|-----------|-----------|------------------|--------|-----------------|
| SF600 | 73.79W±5%@AC120V 74.75W±5%@AC240V | 0.6235A@AC120V 0.6310A@AC240V | 50-60HZ | 4x2 FT | 166.81 umol/S | 384pcs | 1000*150*35.4MM |
| SF300 | 32.77W±5%@AC120V 33.47W±5%@AC240V | 0.4823A@AC120V 0.2953A@AC240V | 50-60HZ | 2.5x2 FT | 74.92 umol/S | 192pcs | 600*150*35.4MM |



TENT



● SPECIFICATIONS

| SIZE | RECOMMENDED LIGHT | WEIGHT |
|----------------------------|----------------------|---------|
| 150x150x200CM(5'X5'X6.6') | SF7000,SF4000,SE7000 | 14.2 KG |
| 140x70x200CM(4.5'X2'X6.6') | SF2000,SF600 | 10.5 KG |
| 120x120x200CM(4'X4'X6.6') | SF4000,SE5000,SE700 | 12.5 KG |
| 90x90x190CM(3'X3'X4.6') | SF2000,SE3000,SE5000 | 9 KG |
| 70x70x160CM(2.3'X2.3'X5') | SF1000,SE3000,SF300 | 6.8 KG |

● FUNCTION



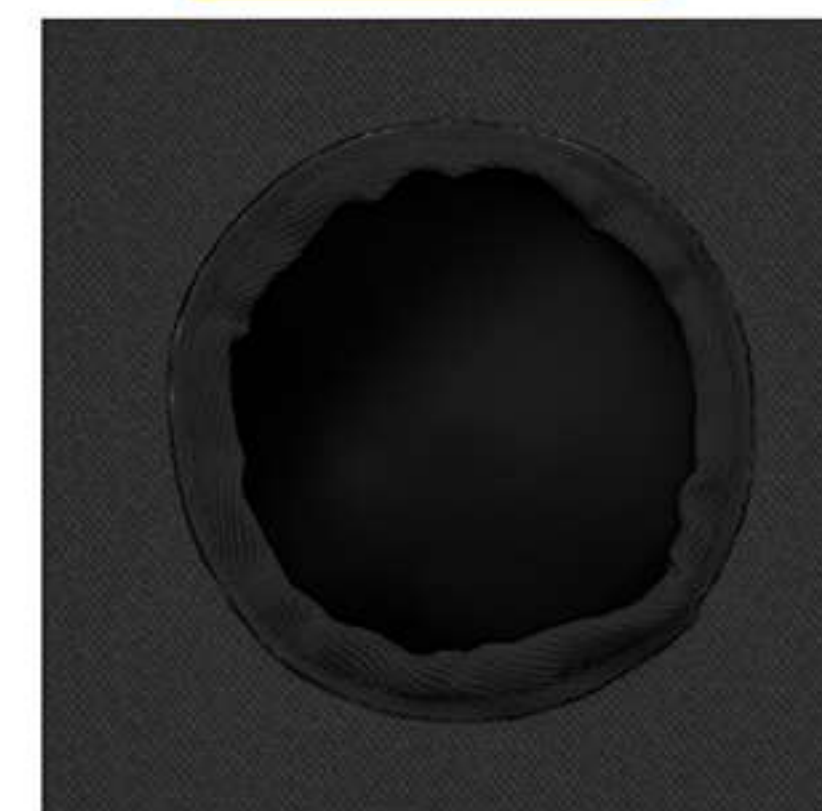
Cooling air tubes



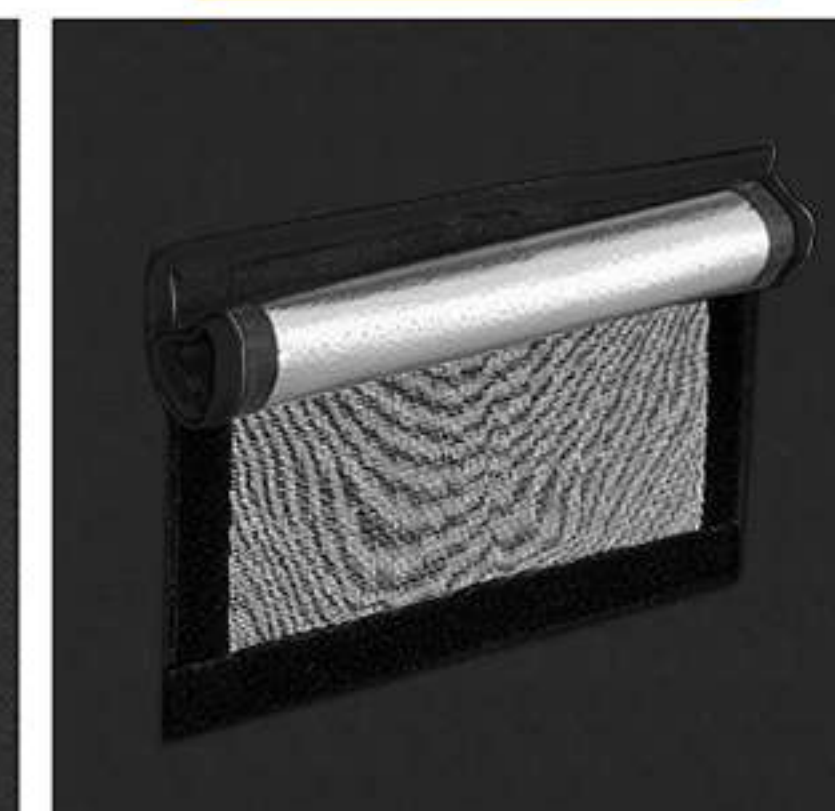
Air extrzction opening



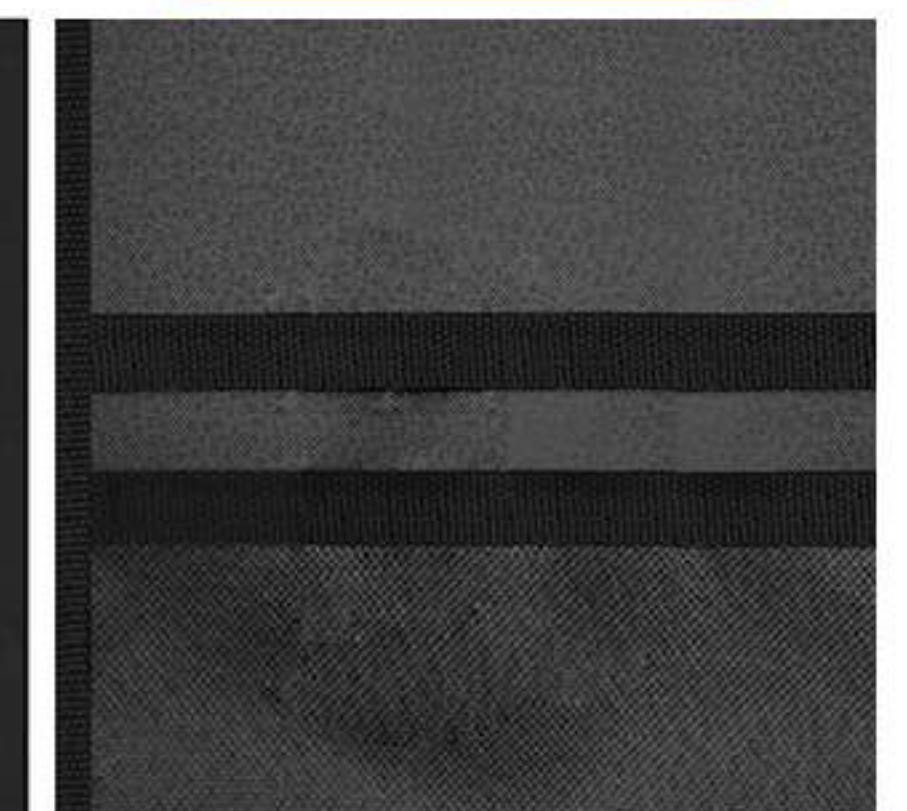
Anti-aging joints



Power cord ports



Ventilation windows



Ventilation windows

GROW KITS

● SF1000 FULL GROW KITS



● SF2000 FULL GROW KITS



- 1 × SF-1000 Full Spectrum LED Grow Light
- 1 × 27" X 27" X 62" Grow Tent
- 1 × 4" Inline Duct Fan
- 1 × 4" Carbon Filter
- 1 × Flex Air Aluminum Ducting
- 2 × Ducting Clips
- 1 × Thermometer and Hygrometer
- 1 × Timer
- 4 × 5 Gallon Grow Bags
- 2 × Adjustable Rope Clip Hanger

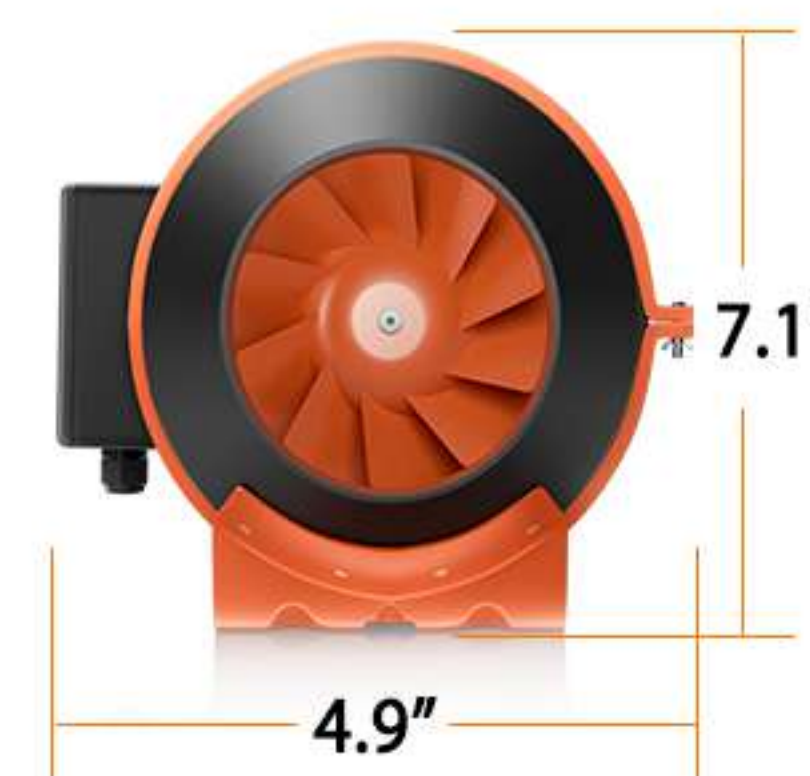
- 1 × SF2000 Full Spectrum LED Grow Light
- 1 × 48" X 24" X 72" Grow Tent
- 1 × 4" Inline Duct Fan
- 1 × 4" Carbon Filter
- 1 × Flex Air Aluminum Ducting
- 1 × Thermometer and Hygrometer
- 1 × Timer
- 4 × 5 Gallon Grow Bags
- 2 × Adjustable Rope Clip Hanger

Spider Farmer 4/6 Inch Intelligent Inline Fan Carbon Filter Combo Ventilation



- 4/6 Inch Fan With Speed Setter
- YOYO
- 10M Flue Pipe
- 4/6 Inch Carbon Filter
- Timer
- Thermo-Hygrometer

● SPECIFICATIONS

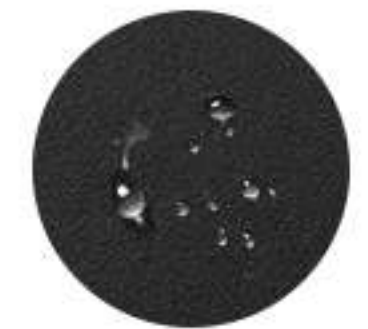


- Model:GDF150-p
- Air Volume:660m³/h
- Duct size: 6 INCH
- Power:70Watt
- Capacitance:5uF
- Airflow:395CFM
- Fan speed:2400RPM
- Current:0.58A
- Volt/Hertz: 120V/60HZ
- Noise:<37dB

ACCESSORIES



Anti-Wrinkle



Easy Cleaning



Anti-Scratch

• SPECIFICATIONS

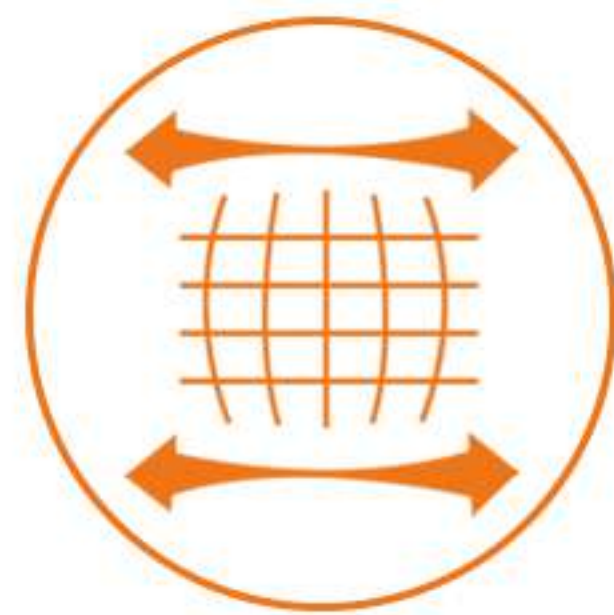
| Size | Power | Product Size | Frequency | Voltage |
|------------|-----------|--------------|-----------|-------------|
| 10"X20.75" | 20 Watts | 10x20.75inch | 60HZ | 110-130 VAC |
| 48"X20.75" | 105 Watts | 48x20.75inch | | |

• Grow bags

5-pack 11 gallon



5-pack 5 gallon



Durable



Breathable



Environment Friendly

FAN KITS

- 4/6 inch knob fan kits



- 4/6 inch speed controller fan with external knob
- 4/6 inches carbon filter
- 4/6 inch flue pipe 10m long
- 3*Adjustable clamps

- 4/6 inch intelligent fan kits



- 205/350 CFM Inline Duct Fan with Temperature Humidity Controller
- Carbon Filter
- 32 Feet Ducting Combo Set Ventilation System
- 3*Adjustable clamps

SPIDER FARMER CONTROLLER



- One channel dimming, eight sets of timing, touch screen control, real-time monitoring of temperature and humidity data.
- Support PWM/0-10V dimming power supply, and load up to 50 single power and 25 dual power dimming lamps.
- Independent interface for temperature and humidity. Insert temperature and humidity sensor probe when using this function.
- output signal to repeater amplifiers. Be able to connect 20 repeater amplifiers at the same time, and one can be connected to up to 50 single dimming power supply lamps.

(This machine requires additional purchase)

● Accessories list

Host

Unified control of power supply with PWM/1-10V functional interface



Humidity Sensor

Used to collect environmental temperature/humidity data



Power adapter

Use to support the power of controller



Dimming signal line

Using grey line to connect other lamps



Using black line to connect Spider Farmer lamps



REGULAR WARRANTY SERVICE

The light can be returned or replaced within 30 days after delivery, in the precondition of non-artificial damage.

● LED Grow Lights

Within 30 days: The light can be returned or replaced after delivery, in the precondition of non-artificial damage quality issues.

30 days -3 months: Accessories, repairs and services are provided free of charge. No return or replacement without quality problems.

3 months - 1year: Accessories, repairs and services are provided free of charge.

1 year – 5 years: Free Accessories. The buyer needs to bear the maintenance fee and two shipping costs.

*Lights shipped from China:Free Accessories.The buyer needs to bear the shipping costs of the accessories.

● Inline Fan

2 years warranty: Under normal use, provide free reparation service within warranty period.

[Operating conditions: ambient temperature around 30°C; Relative humidity 15-65%]

● Controller And MatKits

2 years warranty: Under normal use, provide free reparation service within warranty period.

● Grow Tent And Grow bags

Please check if the package is intact within 48 hours of receiving the product. There is no return service, including tent and mat bags. If you have any questions, please send related videos or photos of the defective product and photos of all labels on the package to email service@spider-farmer.com and we will help you solve the problem as soon as possible.

OFFER SOLUTIONS WITHIN 24 BUSINESS HOURS

Warehouse: US/CA/AU/UK/EU/RU

Repairing Center: US/CA/AU/UK/EU

Email: Info@spider-farmer.com

TEL:+1 (840) 977-6768

Wechat: spiderfarmerled